



INDUSTRIAL

Floor and Wall Protective Coatings Systems



Crown Exclusives: CrownSpatter & CrownCove


High Performance Polymer Floor Overlays With A Decorative Appearance

CROWNCRETE™ SELF-LEVELING POLYMER CONCRETES


Designed for meat, poultry, dairy, pharmaceutical beverage and food processing plants. Crown Polymers offers two types of Polymer-modified concrete overlays: CrownCrete E – a modified Novolac epoxy polymer concrete. CrownCrete U – a modified urethane polymer concrete.

Fast turn around, seamless polymer concrete resurfacing overlays

System Description

 CrownCrete E is a modified Novolac epoxy polymer concrete resurfacing floor overlay that is highly resistant to abrasion, impact, hot liquids and chemicals common to the food industry. CrownCrete E is durable enough to endure thermal shock, aggressive high pressure steam cleaning and scrubbing, and is ideal for use wherever a sanitary environment is required. It may be applied as either self-leveling or trowel system. A variety of surface finishes are available, ranging from smooth to varying degrees of nonslip. Surface profiling can be tailored to individual environments.

System Description

 CrownCrete U is a modified urethane concrete system designed for high moisture areas, harsh conditions, and demanding environments. This polyurethane concrete resurfacing system is designed for high moisture areas and high resistance to thermal shock. It may be applied as either self-leveling or trowel system. Optimal applications include: food processing areas, production areas, bottling areas, cook/chill areas, commercial kitchens, pharmaceutical plants, wash areas, chemical processing areas, and loading/unloading vehicle areas.

Safety and Hygiene

Antimicrobial CrownSilver™ provides sanitary protection using silver-ion technology to control the growth of bacteria and fungi on floor and wall surfaces. It is recommended that CrownSilver™ be added to all CrownCrete™ overlays and top coats where bacterial growth is prevalent.

Where to Use

CrownCrete™ floor systems are ideal for use in indoor and outdoor environments including meat, poultry, dairy, beverage and pharmaceutical processing plants in addition to processing and packaging facilities, commercial kitchens, freezers, coolers, warehouses and shipping docks.

Fast Turn-Around

CrownCrete™ provides extremely fast turn-around due to its rapid placement characteristics and fast cure. In addition, the physical and adhesion properties of CrownCrete™ exceed those of conventional concrete.

CrownAccent™ Products 328

A "Stained Look" Surface That Lasts!

Recommended Use: When a stain appearance is desired, CrownAccent enhances the floor surface with extremely long wear resistance for commercial, institutional and residential environments.

System Description: A translucent polymer that stains the cement and highlights the exposed aggregate. Creates a stylish fashion-forward appearance that is durable, attractive, economical and easy to clean. Highly durable. Easy to refinish and made to look new again.



Learn What's New in Crown Polymers ' Product Innovations

**For More Information, Call Today!
888.732.1270**



CrownQuartz™ Our Most Popular Industrial Floor

System Description: An epoxy polymer concrete designed with colored quartz aggregate. Top coated with a clear epoxy or polyurea polymer whenever UV resistance is required. Application methods include broadcast, slurry-broadcast, power or hand troweled. CrownQuartz creates an industrial grade overlay with a decorative look. Useable on interior or exterior applications. Nearly no odor during placement with fast cure.

Recommended Use: For virtually any environment including institutional, manufacturing or assembly. Excellent for dry or continually wet environments with medium traffic usage. Adjustable surface profiles.

CrownClear™ Epoxy Product 326

CrownPro™ 6,10 Polyurea Products 333, 334

Wall Systems Standard or Reinforced

CrownCote™ Product 401 Epoxy

CrownProCote™ Product 443 Polyurea

CrownFlake™, CrownChips™, CrownHybrid™, CrownBrindle™ Products SP632, 633, 644 & 645 Create a Unique Look

System Description: Each polymer overlay is unique in appearance, depending upon the size and shape of the vinyl flakes within each system. They are available in four distinct mixtures, each with a different look designed to create a special mood within any environment. Standard and custom solid colors and blends are available. Flakes are encapsulated in an epoxy base coat for superior adhesion. Top coat options include epoxy or polyurea. Durable safety walking surfaces exceed OSHA and ADA slip resistant requirements.

Recommended Use: For concrete, wood or steel floors typically found in light manufacturing, production, storage, shipping, warehouse balconies and ramps areas, laboratory, locker rooms, kitchens and eating areas, or wherever a beautiful, durable, seamless surface is desirable.

High Performance Protection for New or Restored Concrete Floors

Designed Specifically for Industrial and Commercial Facilities

CrownShield® 50, 40, 28 & 40-2

Products 320, 321, 322, 323
Best All Around Floor System

Recommended Use: Used in tough, heavy-duty industrial and manufacturing applications.

System Description: A family of high build pigmented epoxy polymers designed for a variety of environmental exposures. Curable on substrate temperatures from 28°F - 110°F (-2°C - 43°C), speed of cure from 2-12 hours. Applied as thin coatings or thick epoxy polymer concrete overlays. The finished floor appearance can be a solid color or random flaked. Ideal for applications where time is of the essence.

CrownShield® SL Product 315

A Crown Polymers Exclusive!

Recommended Use: Ideal for light to heavy-duty commercial or industrial concrete surfaces requiring releveling or a thicker overlayment.

System Description: Self-leveling 1/8" or 3/16" epoxy polymer concrete overlay that becomes a monolithic part of the concrete. A dense aggregate filled overlay with high physical strength properties designed for interior or exterior use. The finished appearance when left as a smooth surface has a highly reflective gloss, or a reduced gloss when textured. Add color flakes and a clear top coat to change from a tough industrial surface to a highly decorative finish.

CrownPro™ SolventShield Product 351

A High-Tech Protector

Recommended Use: For environments where solvent resistance is desirable.

System Description: Two component Novolac/aliphatic epoxy formula is a 100% solids, low odor, applied as a coating or epoxy polymer concrete that becomes a monolithic part of the concrete. Also available as a ESD system.

CrownPro™ EPC TempShield Product 356

Protects Up To 450°F (232°C)

Recommended Use: Protects concrete and tile substrates from hot, dry or liquid environments, highly resistant to thermal changes. Use where industrial protection is needed on floors, drains and containment areas.

System Description: CrownPro EPC TempShield is an epoxy polymer concrete, 100% solids, non-shrink, low odor during application that becomes a monolithic part of the clean concrete. It may be troweled on flat, graded or vertical surfaces.

CrownWear™ 20 EPC-LTC Product 202

Low Temp Cure Down To 20°F (-7°C)

Recommended Use: For freezers, cold storage or outdoor environments.

System Description: Two component, 100% solids, epoxy polymer concrete.



CrownPro™ AcidShield Product 350

Superior Acid Protection

Recommended Use: For environments where acid spills occur and acid resistance is desirable.

System Description: Two component, 100% solids, low odor, Novolac epoxy coating or epoxy polymer concrete.



email: info@crownpolymers.com

www.crownpolymers.com

 Indicates a Crown Polymers Exclusive



**CrownPro™ SparkShield
& CrownLiquidCopper™**

**CrownPro™ SparkShield &
CrownLiquidCopper™ Primer**
Product 353 & 352

Reliable self-leveling ESD Protection

Recommended Use: For floor environments where there is danger of static electricity.

System Description: CrownLiquidCopper is applied as a self-leveling epoxy polymer concrete overlay and top coated with CrownPro SparkShield. The combination of the two products creates a high quality ESD system that complies with NFPA Static Dissipating Standards. The 2mm thick overlay also provides a tough wear surface that typically is applied at 3,000 ft²/hr.

Vapor and Moisture Protection

Improve Floor Longevity With Crown Polymers Support Products



CrownCove™

- 🌀 CrownCove™
- 🌀 CrownCant™
- 🌀 CrownCorner™ Protectors

Fast Around Corners & Straightaways

Recommended Use: A polymer precast floor-to-wall cove system is used for commercial, retail, institutional, and industrial applications with selected floor polymer or cementitious overlays. Its seamless design stops water, chemicals, insects, bacteria, debris, dirt and floor cleaning solutions from puddling or seeping into the floor-to-wall juncture. Decorative and industrial tough. Placement is cost effective and faster than hand trowel methods – and always looks the same from start to finish.

System Description: A Crown Polymers exclusive. The cove system is a precast polymer base molding available in both 4 and 6-inch (100 and 150 mm) heights, with pre-formed pieces that create inside and outside corners. When CrownCove is coated or overlaid with polymers, the finished cove provides a uniform, seamless, integral floor-to-wall juncture, producing the most sanitary and easily maintained floors available.

CrownSilver™

Safety and Hygiene

Product Description: Antimicrobial CrownSilver provides sanitary protection using silver-ion technology to control the growth of bacteria and fungi on floor and wall surfaces. It is recommended that CrownSilver be added to all overlays and top coats when these conditions exist.

CrownCote™ Vapor Barrier Product 303

Stop Vapor Transmission

Recommended Use: To stop vapor transmission through concrete floors when overlaid with hardwood floors, tile, carpet and Crown Polymers overlays.

Product Description: Ultra low viscosity modified 100% solids, non-solvent epoxy. Penetrates into the concrete, seals off, and prevents vapor transmission to the surface. Warranty available.

CrownFlex™ Membrane Product 304

Extra Moisture and Vibration Protection

Load Bearing Control Joint Sealers

CrownFlex™ Joint Sealer Gel Grade Product 501

Non-Sag Consistency

CrownFlex™ Joint Sealer Product 505

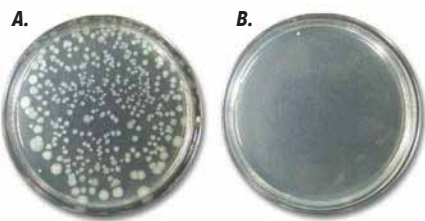
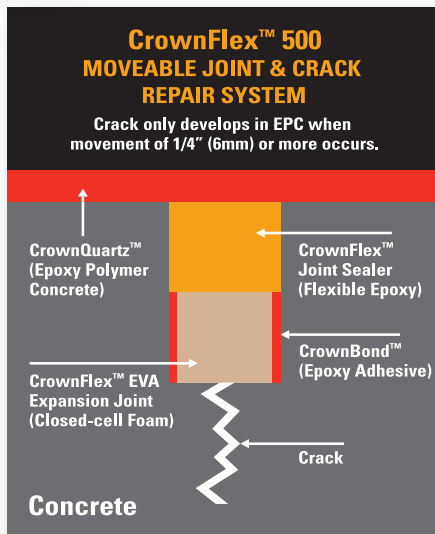
Pourable or Pumpable

CrownFlex™ EVA

Crack, Expansion Joint & Water-Stop

Recommended Use: Waterproof seal for expansion and isolation joints, including moving cracks in concrete. Stops water transfer and allows natural thermal movements or vibrations above and below the water line.

System Description: A composite of CrownFlex EVA, closed cell pre-formed foam, and CrownFlex Joint Sealer, a flexible epoxy. Each joint is designed to provide nearly 100% safety factor in movement and waterproofing.



Escherichia coli Test Results.

A. Control Sample E-Coli 24 hours no treatment.

B. CrownSilver™ E-Coli 24 hours 99.999% control.

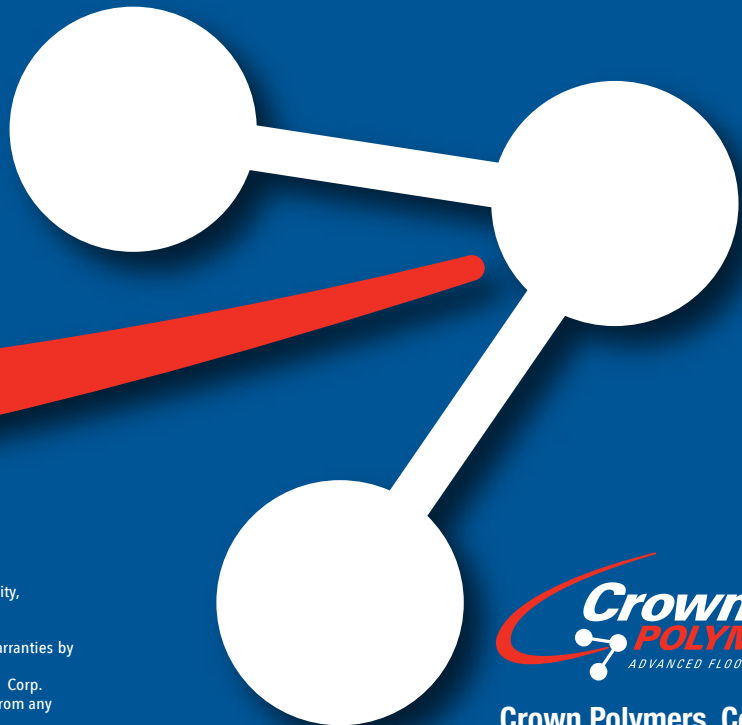
Note: Staphylococcus aureus: Same results.



Crack Repair, Patching, Regrading & Leveling Product Systems Comply with ASTM C881.

For more information on Crown Polymers products and systems please contact us by telephone or email.

Call for the location of
your nearest Crown Polymers
representative.
888.732.1270 Toll Free



Limited Warranty

Crown Polymers Corp. warrants its products to be free of manufacturing defects, to be of good quality, and will meet Crown Polymers current published physical properties when applied in accordance with Crown Polymers written directions and tested in accordance with ACI, ASTM and Crown Polymers Standards. Product proved to be defective will be replaced. There are no other warranties by Crown Polymers Corp. of any nature whatsoever, expressed or implied, including any warranty of merchantability or fitness for a particular purpose in connection with this product. Crown Polymers Corp. shall not be liable for damages of any sort, including remote or consequential damages, resulting from any claimed breach of any warranty, whether expressed or implied, from any other cause whatsoever. Crown Polymers will not be responsible for use of this product in a manner to infringe on any patent held by others.



Crown Polymers, Corp.
8550 W. Desert Inn Rd., Ste. 102-125
Las Vegas, NV 89117